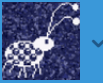




My Stories

Browse

New Story



Search Stories...

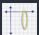


</> Embed



AEASEA 2016 Workshop - Designing Exceptional Mobile Experiences

Notes from Derek Featherstone's full-day workshop about accessibility on the web, presented at An Event Apart Seattle in 2016. Note: because there were a high number of demos in this one, the tweets not stand alone very well - go see Derek present!

by  Anne Gibson a year ago 17 Views



Scott Moffat

@rsmoffat

 Follow

[#aeasea](#) Derek! [#accessibility](#) @ Bell Harbor International Conference Center [instagram.com/p/BD3Whnj6hR/](https://www.instagram.com/p/BD3Whnj6hR/)

12:05 PM - 6 Apr 2016 · Seattle, WA



Anne Gibson

@perpendicularme

 Follow

Reminder: the industry tag for accessibility is [#a11y](#) - a, 11 letters, y - and yes we know it isn't accessible ;) [#AEASEA](#)

12:05 PM - 6 Apr 2016



Anne Gibson

@perpendicularme

 Follow

The real world is not the world we live in as developers and designers [#AEASEA](#) [#a11y](#)

12:06 PM - 6 Apr 2016



Anne Gibson

@perpendicularme

 Follow

This is true of usability in general, too. We are the geeks, the super users, even if we're not compared to our peers [#AEASEA](#) [#a11y](#)

12:06 PM - 6 Apr 2016





@folktrash

 Follow

“Accessibility and real world accessibility are different things.”

[@feather](#) [#aeasea](#)

12:08 PM - 6 Apr 2016 · Belltown, Seattle

  3  1



Anne Gibson

@perpendicularme

 Follow

Accessibility is the right thing to do. “What’s the fine for it?” Legal side is not in [@feather](#)’s sweet spot [#AEASEA](#) [#a11y](#)

12:08 PM - 6 Apr 2016



Anne Gibson

@perpendicularme

 Follow

The Modern Web: progressive enhancement: build solutions on other working solutions. [#AEASEA](#) [#a11y](#)

12:13 PM - 6 Apr 2016



Anne Gibson

@perpendicularme

 Follow

If you think of HTML as a base not just for content but also for functionality, you give a fundamental level of behavior [#AEASEA](#) [#a11y](#)

12:14 PM - 6 Apr 2016

   1



Anne Gibson
@perpendicularme

 Follow

HTML's base functionality gives you something interactive.
HTML = core, CSS = look, JS = advanced behavior [#AEASEA](#)
[#a11y](#)

12:15 PM - 6 Apr 2016



Anne Gibson
@perpendicularme

 Follow

Progressive enhancement and aria are the most significant
concepts and tools that help people that are blind. [#AEASEA](#)
[#a11y](#)

12:16 PM - 6 Apr 2016



Anne Gibson
@perpendicularme

 Follow

There's a lot that goes into making a select box accessible
[#AEASEA](#) [#a11y](#)

12:18 PM - 6 Apr 2016





Anne Gibson

@perpendicularme

Follow

Select

- access keyboard
- move down with the arrow key
- type letters of the values
- return to select
- escape to cancel [#AEASEA](#) [#a11y](#)

12:18 PM - 6 Apr 2016



Anne Gibson

@perpendicularme

Follow

Select

- has multi-select
- tab to next field, closes field
- has to work with a mouse
- visual focus treatment [#AEASEA](#) [#a11y](#)

12:19 PM - 6 Apr 2016



Anne Gibson

@perpendicularme

Follow

Select

- Alt- or command will show the entire list
(Oh shit!)

Rebuilding the whole native functionality is *hard* [#AEASEA](#)
[#a11y](#)

12:21 PM - 6 Apr 2016





Anne Gibson
@perpendicularme

Follow

Any time you can use the basic functionality (as low in the stack as possible), always try to do it that way [#AEASEA](#) [#a11y](#)

12:22 PM - 6 Apr 2016



Anne Gibson
@perpendicularme

Follow

When you put a background image isn't a page with CSS and you flip into a high contrast theme, the background images disappear [#AEASEA](#) [#a11y](#)

12:22 PM - 6 Apr 2016



Anne Gibson
@perpendicularme

Follow

The first rule of Aria is don't use Aria unless you absolutely have to. Solve it lower in the stack. [#AEASEA](#) [#a11y](#)

12:23 PM - 6 Apr 2016



Resistosaurus Max
@JeremyWard33

Follow

.@feather on Progressive Enhancement: can't stop after creating 99% accessibility (site will fail for accessible users) must go 100% [#aeasea](#)

12:25 PM - 6 Apr 2016





Anne Gibson
@perpendicularme

 Follow

The accessibility stack/pyramid. Won't be stable if the top is wider than the base. [#aeasea](#) [#a11y](#)

12:25 PM - 6 Apr 2016



4



4



Anne Gibson
@perpendicularme

Follow

Minimum viable interaction: the smallest amount of interface necessary to complete an interaction #AEASEA #a11y

12:26 PM - 6 Apr 2016



Anne Gibson
@perpendicularme

Follow

Only the most recent version of Dragon Naturally Speaking (v13) can use Aria tags. #AEASEA #a11y

12:28 PM - 6 Apr 2016



Anne Gibson
@perpendicularme

Follow

The addition of text boxes for sliders makes sliders 100% easier to use for voice recognition users #AEASEA #a11y

12:29 PM - 6 Apr 2016



Anne Gibson
@perpendicularme

Follow

Voice recognition is very direct. I can give keystroke commands or direct commands. #AEASEA #a11y

12:30 PM - 6 Apr 2016





Anne Gibson

@perpendicularme

 Follow

If precision matters on sliders, text boxes make providing provision much easier for voice recognition users [#AEASEA](#) [#a11y](#)

12:32 PM - 6 Apr 2016



Anne Gibson

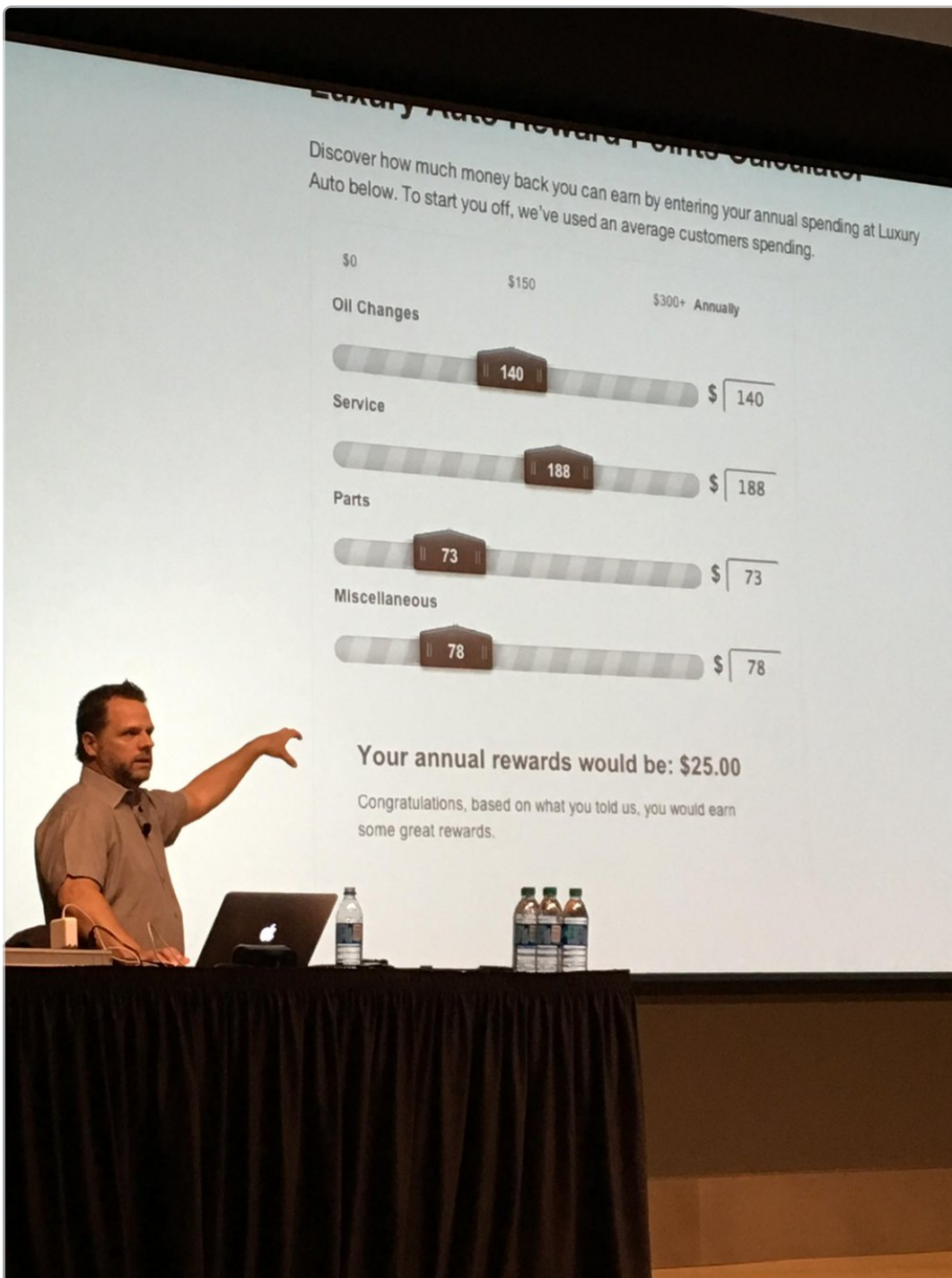
@perpendicularme

 Follow

Put the value on the slider pointer for users with low vision so they can manipulate the slider & see the value [#AEASEA](#) [#a11y](#)

12:33 PM - 6 Apr 2016





Anne Gibson
@perpendicularme

Follow

Sliders that are more accessible #aeasea #a11y

12:34 PM - 6 Apr 2016

1



Anne Gibson

@perpendicularme

 Follow

Try to go through a day with only one hand. Write without holding down the paper. Use the computer. Eat dinner.

[#AEASEA](#) [#a11y](#)

12:38 PM - 6 Apr 2016



Anne Gibson

@perpendicularme

 Follow

“Accidentally Accessible” - wasn’t designed to be accessible, but it is - and it’s targeted at everyone [#AEASEA](#) [#a11y](#)

12:40 PM - 6 Apr 2016



Anne Gibson

@perpendicularme

 Follow

Progressive enhancement is a lot of work, reduces creativity... But is accidentally accessible! It just works! [#AEASEA](#) [#a11y](#)

12:40 PM - 6 Apr 2016



Anne Gibson

@perpendicularme

 Follow

Demo of a form using voice recognition, where autocomplete isn’t triggered using voice recognition b/c no keystroke event

[#AEASEA](#) [#a11y](#)

12:45 PM - 6 Apr 2016





Anne Gibson
@perpendicularme

Follow

You cannot guarantee that someone is going to choose from the list with auto suggest #AEASEA #a11y

12:46 PM - 6 Apr 2016



Anne Gibson
@perpendicularme

Follow

There's nothing about the JavaScript being broken, it's just not written to pick up a paste even #AEASEA #a11y

12:47 PM - 6 Apr 2016



Anne Gibson
@perpendicularme

Follow

If someone's turned JavaScript off or if it's broken, it's not because of their disability, it's because of something else #AEASEA #a11y

12:48 PM - 6 Apr 2016



Resistosaurus Max
@JeremyWard33

Follow

.@feather: You need to allow for arbitrary input. Don't assume the user will perform a logical or natural flow in your forms.#aeasea

12:48 PM - 6 Apr 2016





Anne Gibson

@perpendicularme

 Follow

You cannot count on everyone using the latest and greatest tech and they understand everything. Doesn't exist [#AEASEA](#) [#a11y](#)

12:49 PM - 6 Apr 2016

  2  1



Anne Gibson

@perpendicularme

 Follow

You're never going to think of all the possible scenarios. Build with progressive enhancement so you have a backup!

[#AEASEA](#) [#a11y](#)

12:51 PM - 6 Apr 2016

  1  1



Anne Gibson

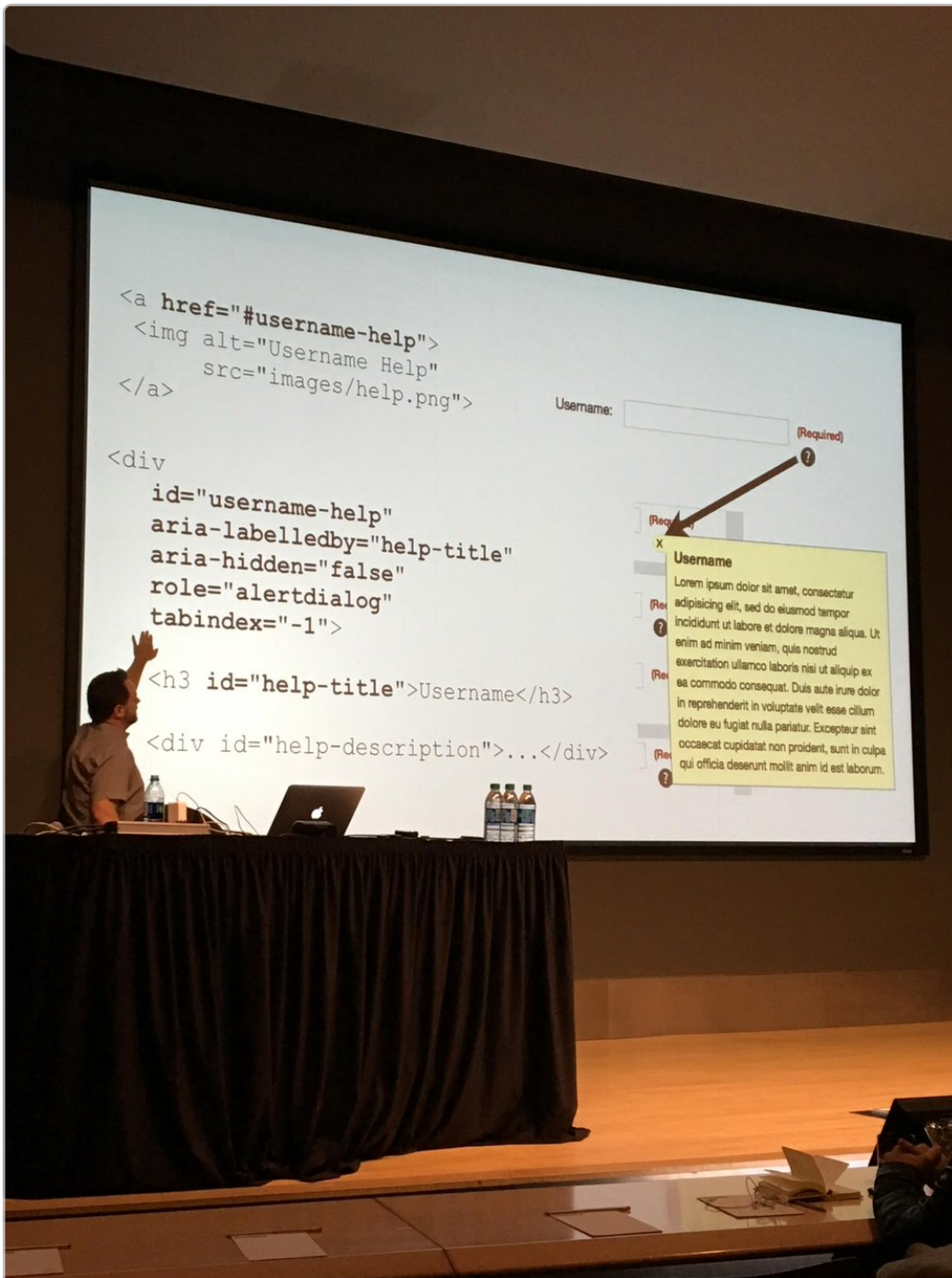
@perpendicularme

 Follow

Build a link with `href=#` or `href=javascript:(void)`, not so great for dialogs. `href=#username-help` to go to a div [#AEASEA](#) [#a11y](#)

12:54 PM - 6 Apr 2016



Anne Gibson
@perpendicularme

 **Follow**

Dialog example [#aeasea](#) [#a11y](#)

12:55 PM - 6 Apr 2016

  1  1



Anne Gibson
@perpendicularme

Follow

You can't count on your CSS being what displays. Users can override your CSS. #AEASEA #a11y

12:58 PM - 6 Apr 2016



Anne Gibson
@perpendicularme

Follow

Aria hidden = true/false programmatically does same thing as display:none but without the override. #AEASEA #a11y

12:59 PM - 6 Apr 2016



Anne Gibson
@perpendicularme

Follow

Use a real href for many reasons. If they all say # screen readers will read them all as "visited link" #AEASEA #a11y

1:00 PM - 6 Apr 2016



Anne Gibson
@perpendicularme

Follow

(So so much info I'm sure I'm missing lots of details. Y'all need to come to this workshop when you can!) #AEASEA #a11y

1:01 PM - 6 Apr 2016





Anne Gibson

@perpendicularme

Follow

The close link in a dialog should have a href that takes you back to the spot in the page that launched it [#AEASEA](#) [#a11y](#)

1:02 PM - 6 Apr 2016



Anne Gibson

@perpendicularme

Follow

Responsive Web Design is the single best thing to happen for people with low vision on the web [#AEASEA](#) [#a11y](#)

1:03 PM - 6 Apr 2016



Anne Gibson

@perpendicularme

Follow

“You’re going to be mad at me because I’m going to show you some real world stuff and you’re going to be like I can’t unsee that” [#AEASEA](#)

1:03 PM - 6 Apr 2016



Anne Gibson

@perpendicularme

Follow

RWD use fluid width *and* height. Inflexible heights mean bumped up font sizes overflow containers [#AEASEA](#) [#a11y](#)

1:20 PM - 6 Apr 2016





Anne Gibson
@perpendicularme

Follow

We're already thinking about flexibility building RWD. Flexibility is critical for those with low vision zooming [#AEASEA](#) [#a11y](#)

1:21 PM - 6 Apr 2016



Anne Gibson
@perpendicularme

Follow

27" monitor set to 832x624 monitor. Picture that. That's what someone with low vision might be using. [#AEASEA](#) [#a11y](#)

1:25 PM - 6 Apr 2016



Anne Gibson
@perpendicularme

Follow

Viewport is not a proxy for anything.
(Louder for those in the back: VIEWPORT IS NOT A PROXY FOR ANYTHING) [#AEASEA](#) [#a11y](#)

1:26 PM - 6 Apr 2016



Resistosaurus Max
@JeremyWard33

Follow

.@feather on accessible development: "Get those assumptions that are in your head, and get them out of your head." [#aeasea](#)

1:26 PM - 6 Apr 2016





Anne Gibson
@perpendicularme

Follow

Fluid grid allows people with low vision to reflow and resize their content better. [#AEASEA](#) [#a11y](#)

1:26 PM - 6 Apr 2016



Anne Gibson
@perpendicularme

Follow

Browser zoom, text resizing are *both* used. Text resizing just reflows, not blow out viewport [#AEASEA](#) [#a11y](#)

1:27 PM - 6 Apr 2016



Anne Gibson
@perpendicularme

Follow

three out of eight screen reader users have no monitor, “display” is showing as portrait [#AEASEA](#) [#a11y](#)

1:30 PM - 6 Apr 2016



Anne Gibson
@perpendicularme

Follow

For screen readers, viewports using a responsive mode because no monitor get “mobile” view w/keyboard [#AEASEA](#) [#a11y](#)

1:31 PM - 6 Apr 2016





Anne Gibson
@perpendicularme

Follow

You can't assume a tablet viewport size means the user is on a tablet. Same for phone. [#AEASEA](#) [#a11y](#)

1:31 PM - 6 Apr 2016



Anne Gibson
@perpendicularme

Follow

Test all responsive layouts in a browser on a desktop. All input types apply [#AEASEA](#) [#a11y](#)

1:32 PM - 6 Apr 2016



Anne Gibson
@perpendicularme

Follow

You should have personas specialized for your project that reflect accessibility implications [#AEASEA](#) [#a11y](#)

1:34 PM - 6 Apr 2016



Anne Gibson
@perpendicularme

Follow

The speed with which screen reader users listen can be 280wpm or more. [#AEASEA](#) [#a11y](#)

1:41 PM - 6 Apr 2016





Anne Gibson
@perpendicularme

 Follow

Because of the speed, people may or may not hear the instructions you wrote for them [#AEASEA](#) [#a11y](#)

1:41 PM - 6 Apr 2016



Anne Gibson
@perpendicularme

 Follow

Semantic pathways and Aria are critical for people on screen readers. "this is a dialog" is important info [#AEASEA](#) [#a11y](#)

1:43 PM - 6 Apr 2016



Heather
@_hmig

 Follow

When companies (have the nerve) to tell a blind user to ask a friend for help w/their site: What if they don't use a monitor? [#aeasea](#) [#a11y](#)

1:43 PM - 6 Apr 2016



Anne Gibson
@perpendicularme

 Follow

ASL (American Sign Language) has a different grammar than English so ASL users are translating what they read while reading [#AEASEA](#) [#a11y](#)

1:45 PM - 6 Apr 2016





Anne Gibson
@perpendicularme

Follow

Your browser renders the DOM and ultimately create an Accessibility Tree. #AEASEA #a11y

1:48 PM - 6 Apr 2016



Anne Gibson
@perpendicularme

Follow

You interact with the Operating System. Through the platform accessibility API appropriate details are provided to the user #AEASEA #a11y

1:48 PM - 6 Apr 2016



An Event Apart
@aneventapart

Follow

The feeling when our home page's accessibility error is uncovered by @feather's live screenreader demo at A Day Apart. Fixed now! #aeasea

1:50 PM - 6 Apr 2016



Anne Gibson
@perpendicularme

Follow

When a new browser window opens, voiceover says "new browser window". Focus on a link and it says "link" #AEASEA #a11y

1:51 PM - 6 Apr 2016





Anne Gibson
@perpendicularme

Follow

The details of what is what and how it's read out is coming from the accessibility tree [#AEASEA](#) [#a11y](#)

1:51 PM - 6 Apr 2016



Anne Gibson
@perpendicularme

Follow

New browser windows are announced, but a div that appears w/no announcement in the accessibility tree aren't read at all [#AEASEA](#) [#a11y](#)

1:53 PM - 6 Apr 2016



Anne Gibson
@perpendicularme

Follow

Everything has a role, an accessible name, a state, and some properties available for it. [#AEASEA](#) [#a11y](#)

1:54 PM - 6 Apr 2016



Anne Gibson
@perpendicularme

Follow

“Tag this column colon edit”
label is Tag this column:
Edit indicates it's an editable text field [#AEASEA](#) [#a11y](#)

1:54 PM - 6 Apr 2016





Anne Gibson
@perpendicularme

Follow

Safari has an accessibility inspector available by installing XCode for the Mac. Displays the accessibility tree. [#AEASEA](#) [#a11y](#)

1:56 PM - 6 Apr 2016

3 3



Anne Gibson
@perpendicularme

Follow

Safari reads out the page according to the accessibility spec. Chrome reads everything. [#AEASEA](#) [#a11y](#)

2:16 PM - 6 Apr 2016

1



Anne Gibson
@perpendicularme

Follow

Safari interprets the DOM and gives an indication of what's in it, but Chrome can't figure out the tree [#AEASEA](#) [#a11y](#)

2:16 PM - 6 Apr 2016

1



Anne Gibson
@perpendicularme

Follow

There's a bug in some browsers for SVGs that they don't read the alt tag. Add "role=image" on the image to fix [#AEASEA](#) [#a11y](#)

2:28 PM - 6 Apr 2016

1 1



Anne Gibson

@perpendicularme

 Follow

What is this thing?
What can I do with it?
What happens if I activate it?
Did that thing happen?#AEASEA #a11y

2:34 PM - 6 Apr 2016



Anne Gibson

@perpendicularme

 Follow

It's easy to mess up the alt text. You need to keep track of it when changing images. #AEASEA #a11y

2:34 PM - 6 Apr 2016



Anne Gibson

@perpendicularme

 Follow

If the image alt text is wrong and the user is trying to select it using the alt tag text, that's really hard #AEASEA #a11y

2:35 PM - 6 Apr 2016



Anne Gibson

@perpendicularme

 Follow

Very typical behavior from voice recognition users to assume they messed up — huge headache when it isn't #AEASEA #a11y

2:37 PM - 6 Apr 2016





Anne Gibson

@perpendicularme

Follow

Voice recognition allows for a mouse grid to zoom in on the click area of the screen. Painful [#AEASEA](#) [#a11y](#)

2:38 PM - 6 Apr 2016



Anne Gibson

@perpendicularme

Follow

Recommended screen readers:

Mac: voiceover

Windows: start with NVDA on Firefox

JAWS is most popular but >\$1k [#AEASEA](#) [#a11y](#)

2:40 PM - 6 Apr 2016



Anne Gibson

@perpendicularme

Follow

If you're doing stuff from a QA level, somebody needs JAWS for testing, but devs probably don't to start [#AEASEA](#) [#a11y](#)

2:40 PM - 6 Apr 2016



Anne Gibson

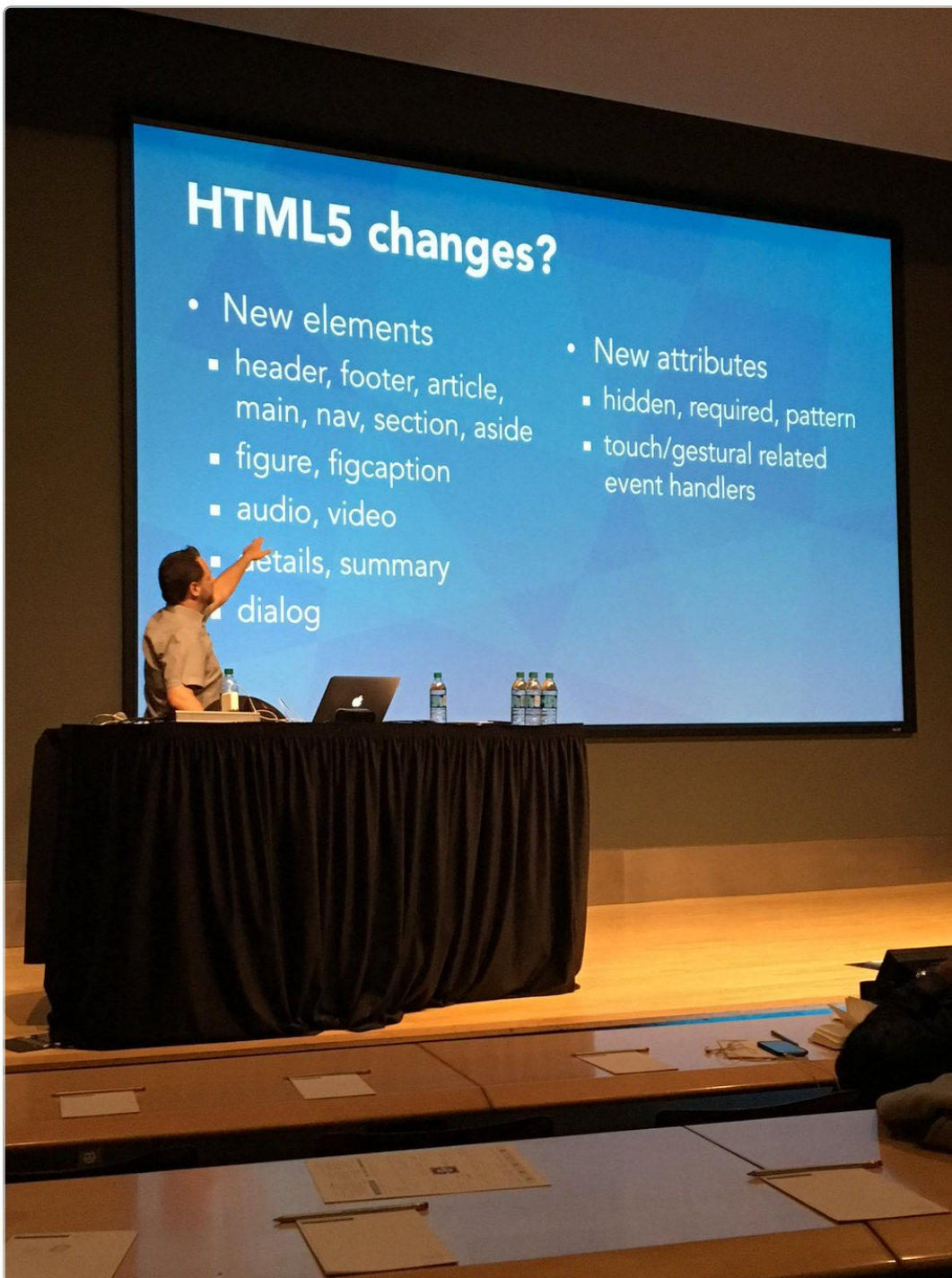
@perpendicularme

Follow

HTML 5 was an attempt to pave the cow paths and pick up containers we were assigning via divs [#AEASEA](#) [#a11y](#)

2:42 PM - 6 Apr 2016





HTML5 changes?

- New elements
 - header, footer, article, main, nav, section, aside
 - figure, figcaption
 - audio, video
 - details, summary
 - dialog
- New attributes
 - hidden, required, pattern
 - touch/gestural related event handlers



Anne Gibson
@perpendicularme

 Follow

A list of new HTML 5 elements [#aeasea](#) [#a11y](#)

2:44 PM - 6 Apr 2016

  2  3



Anne Gibson
@perpendicularme

Follow

Lots of new elements in HTML 5. We should be able to build assistive technologies that tap into this stuff [#AEASEA](#) [#a11y](#)

2:45 PM - 6 Apr 2016

2 1



Anne Gibson
@perpendicularme

Follow

We should never need to use “skip to main content” but we don’t have predictability to get straight to main content [#AEASEA](#) [#a11y](#)

2:46 PM - 6 Apr 2016



Anne Gibson
@perpendicularme

Follow

Modern HTML 5 forms - put a type on a field, and it adds extra tools (correct keyboard, etc.) [#AEASEA](#) [#a11y](#)

2:48 PM - 6 Apr 2016



Anne Gibson
@perpendicularme

Follow

Type = color for a color picker (where supported) and provides a text box where not supported [#AEASEA](#) [#a11y](#)

2:50 PM - 6 Apr 2016



Anne Gibson
@perpendicularme

 Follow

Date can't be styled, so everyone's avoiding using that field.
[#AEASEA](#) [#a11y](#)

2:52 PM - 6 Apr 2016



Anne Gibson
@perpendicularme

 Follow

The required attribute in HTML 5 can't be styled, but Aria's required attribute is in addition to existing styling [#AEASEA](#)
[#a11y](#)

2:53 PM - 6 Apr 2016



Anne Gibson
@perpendicularme

 Follow

Depending on the browser you're using, block-level elements might show different tab stops. [#AEASEA](#) [#a11y](#)

2:56 PM - 6 Apr 2016



Anne Gibson
@perpendicularme

 Follow

When you treat a block of text as one big link, it reads it as one big link [#AEASEA](#) [#a11y](#)

2:58 PM - 6 Apr 2016





Anne Gibson
@perpendicularme

 Follow

How would you use tabindex? -1 to focus on something. 0 to make it keyboard focusable. OK but not great, make it a link
[#AEASEA #a11y](#)

4:11 PM - 6 Apr 2016



Anne Gibson
@perpendicularme

 Follow

TabIndex 1-32,000 whatever? Don't use them, fix your source order and rely on it as much as you can [#AEASEA #a11y](#)

4:12 PM - 6 Apr 2016



Anne Gibson
@perpendicularme

 Follow

How do you determine which Aria tags are supported and which are useless? Only option is testing [#AEASEA #a11y](#)

4:12 PM - 6 Apr 2016



Anne Gibson
@perpendicularme

 Follow

Html5accessibility.com to keep up on what's doing what in browser changes. [#AEASEA #a11y](#)

4:13 PM - 6 Apr 2016



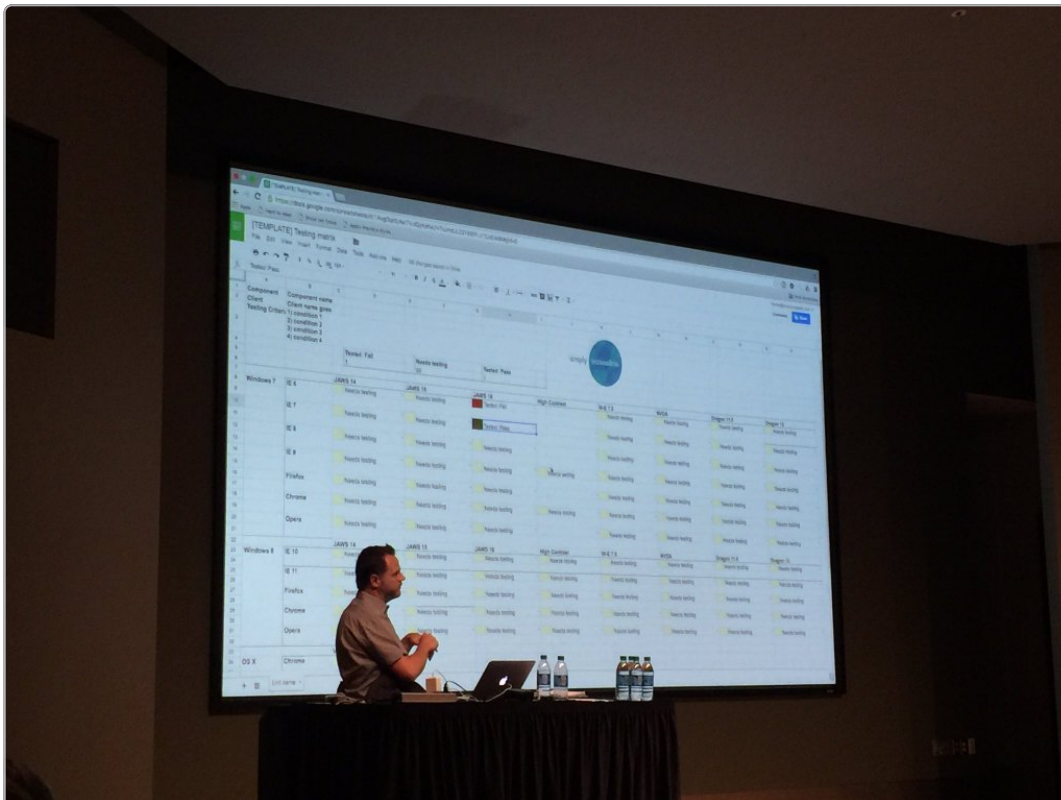


Anne Gibson
@perpendicularme



Canuse.com/#search=aria will give you the details of Aria support they have [#AEASEA](#) [#a11y](#)

4:14 PM - 6 Apr 2016



""-(๖๓๖)""
@whozzawuzza



ARIA testing matrix. [#aeasea](#) [@feather](#)

4:17 PM - 6 Apr 2016





Anne Gibson
@perpendicularme

Follow

“This is my favorite question so far. It has nothing on the paper. So... Yes.” #AEASEA

4:18 PM - 6 Apr 2016



Anne Gibson
@perpendicularme

Follow

Best practices are learned by working with people with disabilities. WebAIM list. #AEASEA #a11y

4:19 PM - 6 Apr 2016



Anne Gibson
@perpendicularme

Follow

If you provide a replacement visual indicator of focus can you get rid of the default focus outline? Yes - must replace!
#AEASEA #a11y

4:20 PM - 6 Apr 2016



Anne Gibson
@perpendicularme

Follow

.@feather recommends turning off the default and provide a better focus indicator - you can do better than the browsers
#AEASEA #a11y

4:20 PM - 6 Apr 2016





Anne Gibson
@perpendicularme

 Follow

Most common disability encountered on the web? #1 effect is keyboard-related problems (multiple disabilities rely on keyboard) #AEASEA #a11y

4:21 PM - 6 Apr 2016

  2  1



Anne Gibson
@perpendicularme

 Follow

As of 2010 in the US 56.7 million reported having a disability in the census - 15%-18%, 12% has a severe disability #AEASEA #a11y

4:22 PM - 6 Apr 2016



Anne Gibson
@perpendicularme

 Follow

There are 6-7x more people with low vision than are completely blind #AEASEA #a11y

4:22 PM - 6 Apr 2016



Anne Gibson
@perpendicularme

 Follow

Do we need to still care about WCAG 1? no. #AEASEA #a11y

4:23 PM - 6 Apr 2016



Manu

@BTManu

 Follow

15% of the people in the US have some disabilities [#aeasea](#)
[#accessibility](#)

4:23 PM - 6 Apr 2016



Anne Gibson

@perpendicularme

 Follow

What about iOS? Has voiceover, has zoom, has voice access.
Could be a whole day conference by itself [#AEASEA](#) [#a11y](#)

4:24 PM - 6 Apr 2016



Anne Gibson

@perpendicularme

 Follow

Mobile devices are becoming much much more accessible than
they used to be [#AEASEA](#) [#a11y](#)

4:24 PM - 6 Apr 2016



Anne Gibson

@perpendicularme

 Follow

How to measure improvements? Difficult to pinpoint if wrapped
in another redesign. Some things you can do: [#AEASEA](#) [#a11y](#)

4:25 PM - 6 Apr 2016





Anne Gibson
@perpendicularme

Follow

- Measure increased number of visitors
- conversion rates
- return visitors [#AEASEA](#) [#a11y](#)

4:26 PM - 6 Apr 2016



Anne Gibson
@perpendicularme

Follow

There's no user agent string to detect screen readers or other assistive technology. You can't track them. [#AEASEA](#) [#a11y](#)

4:26 PM - 6 Apr 2016



Anne Gibson
@perpendicularme

Follow

You *can* track the 1st link on the page to see how many ppl use it with a keyboard or mouse [#AEASEA](#) [#a11y](#)

4:27 PM - 6 Apr 2016



Anne Gibson
@perpendicularme

Follow

In 2010 it was estimated 56.7mil of disabled people have 200billion dollars per year in discretionary spending [#AEASEA](#) [#a11y](#)

4:30 PM - 6 Apr 2016





Anne Gibson
@perpendicularme

Follow

Aria gives us programmatic accessibility where it doesn't already exist. #AEASEA #a11y

4:34 PM - 6 Apr 2016



Anne Gibson
@perpendicularme

Follow

Aria allows us to express information and relationships about objects on our site #AEASEA #a11y

4:34 PM - 6 Apr 2016



Anne Gibson
@perpendicularme

Follow

Aria lets us express visual relationships that otherwise aren't expressed in code, like groupings of items as "search" #AEASEA #a11y

4:35 PM - 6 Apr 2016



Anne Gibson
@perpendicularme

Follow

Checkboxes:

- keyboard focusable
- toggle between checked and uncheck with mouse or keyboard
- value to server when submitted #AEASEA #a11y

4:37 PM - 6 Apr 2016





Anne Gibson

@perpendicularme

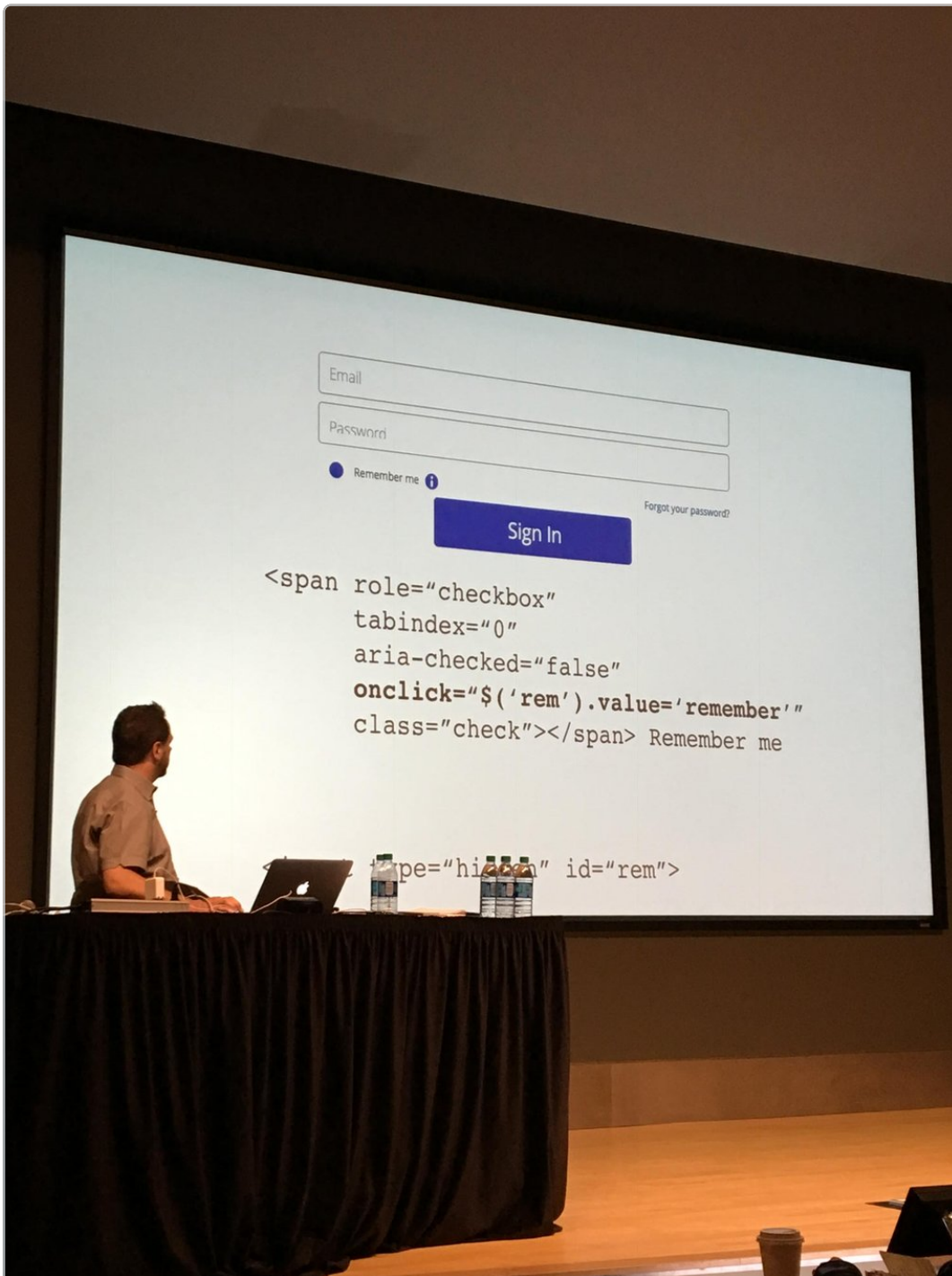


Checkboxes

- label will toggle checkbox
- can be selected by default
- can be disabled (Can't change, can't tab to it) [#AEASEA](#) [#a11y](#)

4:38 PM - 6 Apr 2016





Anne Gibson
@perpendicularme

 Follow

Custom checkbox with aria roles, name, state, properties

[#aeasea](#) [#a11y](#)

4:41 PM - 6 Apr 2016

  1  3



Anne Gibson
@perpendicularme

Follow

If you're building a checkbox from scratch, you're wasting your time. Use the standard checkbox and style it with CSS

[#AEASEA](#) [#a11y](#)

4:42 PM - 6 Apr 2016

2 1



Anne Gibson
@perpendicularme

Follow

Use Aria widgets for the things we *don't already have*

[#AEASEA](#) [#a11y](#)

4:44 PM - 6 Apr 2016



Anne Gibson
@perpendicularme

Follow

There are a whole bunch of Aria roles you should never use because you should use the HTML instead! Button, checkbox, etc. [#AEASEA](#) [#a11y](#)

4:45 PM - 6 Apr 2016



Anne Gibson
@perpendicularme

Follow

[points to marquee] "I'm not even going to dignify that."

[#AEASEA](#) [#a11y](#)

4:46 PM - 6 Apr 2016



Anne Gibson
@perpendicularme

Follow

Definitely use Aria for sliders especially if a two-thumb slider.
[#AEASEA](#) [#a11y](#)

4:47 PM - 6 Apr 2016



Anne Gibson
@perpendicularme

Follow

We don't have tabs and tabpanels in HTML 5 so they're in Aria tabs, but they're difficult to operate [#AEASEA](#) [#a11y](#)

4:48 PM - 6 Apr 2016



Anne Gibson
@perpendicularme

Follow

Note: your code can be technically perfect and still unusable. Browsers, specs, etc. may be doing weird things too. [#AEASEA](#) [#a11y](#)

4:49 PM - 6 Apr 2016



Anne Gibson
@perpendicularme

Follow

When you tab to a tab the screen reader says "Tab. Tab!" And that's a bit confusing. [#AEASEA](#) [#a11y](#)

4:50 PM - 6 Apr 2016





mike

@mandrewnz

 Follow

Use ARIA widgets for things that we don't already have in HTML
[#aeasea](#)

4:51 PM - 6 Apr 2016



Anne Gibson

@perpendicularme

 Follow

Landmark roles set landmarks on the page. Application, banner,
complementary, contentinfo, form, main, navigation, search
[#AEASEA](#) [#a11y](#)

4:52 PM - 6 Apr 2016



Anne Gibson

@perpendicularme

 Follow

HTML 5 has a header, Aria uses banner for the same
thing [#AEASEA](#) [#a11y](#)

4:52 PM - 6 Apr 2016



Anne Gibson

@perpendicularme

 Follow

Aria's "complementary" is HTML 5's "aside" [#AEASEA](#) [#a11y](#)

4:53 PM - 6 Apr 2016





Anne Gibson
@perpendicularme

Follow

Can use the Aria role of “contentinfo” within the content of the HTML 5 footer #AEASEA #a11y

4:53 PM - 6 Apr 2016



Anne Gibson
@perpendicularme

Follow

Aria role of “main” for main body of the page #AEASEA #a11y

4:54 PM - 6 Apr 2016



Anne Gibson
@perpendicularme

Follow

Aria was invented before HTML 5. When HTML 5 came out we had to do `<nav role=“navigation”>` to make sure the browser got it #AEASEA #a11y

4:56 PM - 6 Apr 2016



Anne Gibson
@perpendicularme

Follow

Now browsers’ accessibility trees know that `<nav>` is a `role=“navigation”` implicitly. Progress! #AEASEA #a11y

4:57 PM - 6 Apr 2016





Anne Gibson

@perpendicularme

 Follow

.@feather is playing the Star Wars Holiday Special for us. WHAT DID WE DO WRONG, @FEATHER?? *sobs* #AEASEA

4:59 PM - 6 Apr 2016

  1  2



""(๖_๖)""

@whozzawuzza

 Follow

Bea Arthur and Jefferson Starship were in the #StarWars holiday special. #aeasea

5:00 PM - 6 Apr 2016

   1



Anne Gibson

@perpendicularme

 Follow

It's like they thought "Wookies are good, so many many many wookies must be many many many good" #AEASEA #a11y

5:02 PM - 6 Apr 2016

  1 



Anne Gibson

@perpendicularme

 Follow

Landmark roles are like wookies. Too many is more confusing and difficult to deal with. Be cautious #AEASEA #a11y

5:03 PM - 6 Apr 2016



Brittany Bentley

@bbcbentley

Gotta love any talk that includes the Star Wars Holiday Special. And then draws an #a11y lesson from it. Thanks @feather #aeasea #AEA2016

 A YEAR AGO



Anne Gibson

@perpendicularme

 Follow

On iOS, you can go into accessibility voiceover settings - see that landmarks are not on by default. #AEASEA #a11y

5:04 PM - 6 Apr 2016



Anne Gibson

@perpendicularme

 Follow

The voiceover rotor allows you to choose the mode of Aria items to go through. Headings goes through headings #AEASEA #a11y

5:05 PM - 6 Apr 2016



Anne Gibson

@perpendicularme

 Follow

Links will only find links in the page. Form control mode will just go through forms. #AEASEA #a11y

5:06 PM - 6 Apr 2016





Anne Gibson
@perpendicularme

 Follow

Aria states:

Aria-hidden hides things programmatically as well as visually
Aria-required (fields)[#AEASEA](#) [#a11y](#)

5:28 PM - 6 Apr 2016



Anne Gibson
@perpendicularme

 Follow

Aria-label Don't want a visible label for a field but still need a
label [#AEASEA](#) [#a11y](#)

5:29 PM - 6 Apr 2016



Anne Gibson
@perpendicularme

 Follow

Aria-labelledby says which ID on the page is the label for the
field in question. [#AEASEA](#)

5:29 PM - 6 Apr 2016





""-(טאט)ר""
@whozzawuzza

 Follow

youtube.com/watch?v=4zLfCn... #aeasea

5:31 PM - 6 Apr 2016



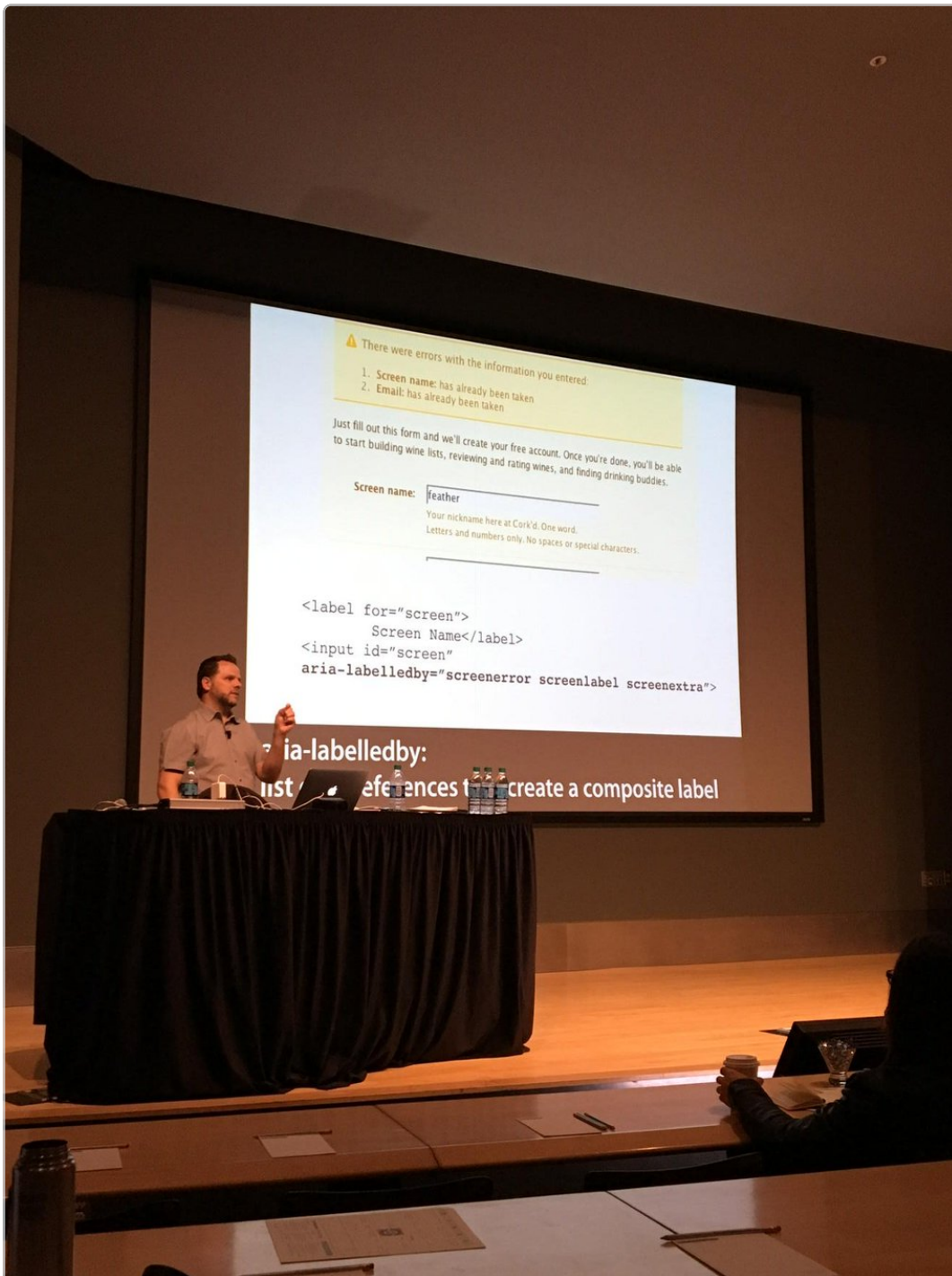
Anne Gibson
@perpendicularme

 Follow

If you've got a grid of form fields (radio buttons), you need to define its label by the column and row, [#AEASEA](#) [#a11y](#)

5:33 PM - 6 Apr 2016





Anne Gibson
@perpendicularme



Labelledby concatenates 3 things on the page to make the label
[#a11y](#) [#a11y](#)

5:36 PM - 6 Apr 2016

👤 1 ❤️ 2



Anne Gibson
@perpendicularme

Follow

Aria-describedby is a set of IDs that describe the thing you're pointing to. #AEASEA #a11y

5:38 PM - 6 Apr 2016



Anne Gibson
@perpendicularme

Follow

Some folks use aria-describedby for tool tips but browser behavior is inconsistent, big pause involved #AEASEA #a11y

5:41 PM - 6 Apr 2016



Anne Gibson
@perpendicularme

Follow

Critical tool tips: build the text into the label and then style it with CSS to display on hover. It'll get read #AEASEA #a11y

5:43 PM - 6 Apr 2016



Anne Gibson
@perpendicularme

Follow

Aria-detailsat allows you to enter an entire URL for the content you need. New in Aria 1.1 #AEASEA #a11y

5:44 PM - 6 Apr 2016





Anne Gibson
@perpendicularme

Follow

Radio buttons faked with Aria may not get picked up by Dragon Naturally Speaking at all [#AEASEA](#) [#a11y](#)

5:58 PM - 6 Apr 2016



Anne Gibson
@perpendicularme

Follow

Screen readers are pretty much the only accessible technology that works with Aria right now [#AEASEA](#) [#a11y](#)

6:00 PM - 6 Apr 2016



Anne Gibson
@perpendicularme

Follow

.@feather is going over a case study which I probably can't tweet as a whole so that's the context of the next bunch [#AEASEA](#) [#a11y](#)

6:22 PM - 6 Apr 2016



Anne Gibson
@perpendicularme

Follow

What responds to clicks? Bind click events to the right things
Focus management/keyboard access
Adding ARIA [#AEASEA](#) [#a11y](#)

6:23 PM - 6 Apr 2016





Anne Gibson

@perpendicularme

Follow

If something's clickable it should be a link or a button. If it's not, you're doing it wrong. Don't bind to divs. #AEASEA #a11y

6:24 PM - 6 Apr 2016

8 6



Anne Gibson

@perpendicularme

Follow

Managing focus: make sure that your hrefs go to real IDs even via Angular #AEASEA #a11y

6:25 PM - 6 Apr 2016



Anne Gibson

@perpendicularme

Follow

If a button's clicked, put focus on the next important thing, like the layer title #AEASEA #a11y

6:27 PM - 6 Apr 2016



Anne Gibson

@perpendicularme

Follow

When you bring in an error message, put the focus on it so the user knows where they are #AEASEA #a11y

6:29 PM - 6 Apr 2016

1



Anne Gibson

@perpendicularme

 Follow

When should I move the focus? If the thing you need read next is next in the DOM you're ok, else, move it. [#AEASEA](#) [#a11y](#)

6:30 PM - 6 Apr 2016



Anne Gibson

@perpendicularme

 Follow

The importance of moving focus is in proportion to how far away the next thing is in the DOM. [#AEASEA](#) [#a11y](#)

6:31 PM - 6 Apr 2016



Anne Gibson

@perpendicularme

 Follow

Even in single page mode, update the page title when you update the view so they know where they are [#AEASEA](#) [#a11y](#)

6:32 PM - 6 Apr 2016



Anne Gibson

@perpendicularme

 Follow

Icon fonts are extremely unreliable in screen readers. "Unintelligible." Hide the icon w/Aria and put text in [#AEASEA](#) [#a11y](#)

6:33 PM - 6 Apr 2016





Anne Gibson
@perpendicularme

Follow

“Showing X of 13” dynamic text. Live region with role of “status”.
[#AEASEA](#) [#a11y](#)

6:34 PM - 6 Apr 2016



Anne Gibson
@perpendicularme

Follow

Aria-live = polite means “don’t interrupt the user” vs assertive,
which is “do it now”[#AEASEA](#) [#a11y](#)

6:35 PM - 6 Apr 2016



Anne Gibson
@perpendicularme

Follow

Aria-atomic = “true” means “treat this text as a unit even though
only the number is being updated”[#AEASEA](#) [#a11y](#)

6:36 PM - 6 Apr 2016



Anne Gibson
@perpendicularme

Follow

ngAria is an angular library that lets you attach a lot of Aria stuff
for you [#AEASEA](#) [#a11y](#)

6:39 PM - 6 Apr 2016





Anne Gibson
@perpendicularme

 Follow

Semantic markup still matters!
Bind clicks to natively clickable controls.
Control & manage focus
Use Aria as needed [#AEASEA](#) [#a11y](#)

6:41 PM - 6 Apr 2016



Zeldman 
@zeldman

 Follow

“Performance is a design feature, not just a technical concern.”
[@yeseniaa](#) [#aeasea](#) [#performance](#)

1:19 PM - 4 Apr 2016



Anne Gibson
@perpendicularme

 Follow

Aria-controls tells the user that there's a relationship between
this item and that container over there [#AEASEA](#) [#a11y](#)

6:44 PM - 6 Apr 2016



Anne Gibson
@perpendicularme

 Follow

Aria-owns does similar but with a parent/child relationship
[#AEASEA](#) [#a11y](#)

6:44 PM - 6 Apr 2016





Anne Gibson
@perpendicularme

 Follow

Key lesson: Use built-in HTML before using Aria. #AEASEA
#a11y

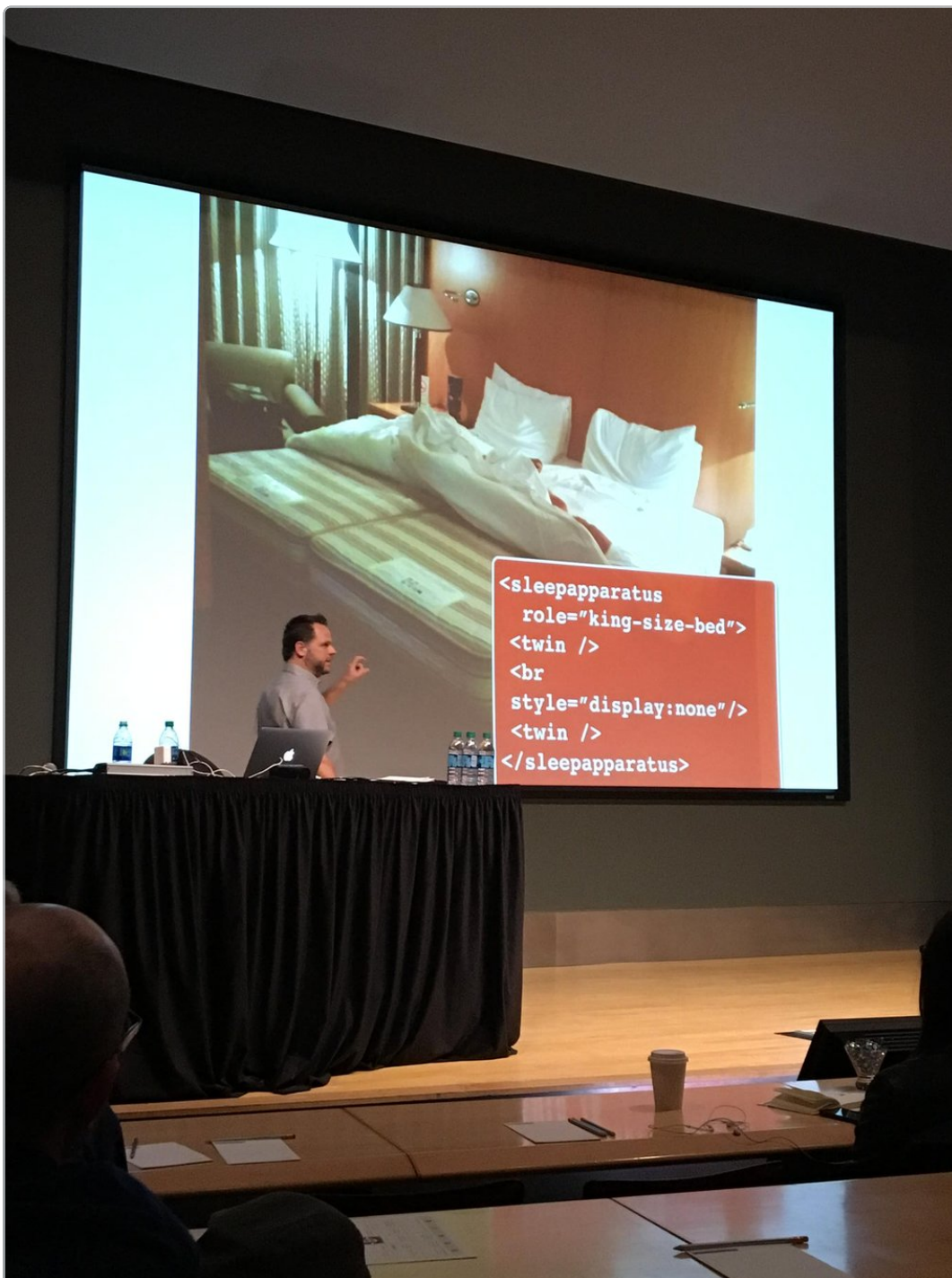
6:45 PM - 6 Apr 2016



1



2



Anne Gibson
@perpendicularme

 Follow

What's under the sheets matters! #aeasea #a11y

6:47 PM - 6 Apr 2016

  1  2



Anne Gibson
@perpendicularme

Follow

Always think about “what’s the non-ARIA use case here? What could happen?” #AEASEA #a11y

6:49 PM - 6 Apr 2016



Anne Gibson
@perpendicularme

Follow

If you put aria-required on all the required fields, you’re covered programmatically for screen readers but don’t rely on it #AEASEA #a11y

6:51 PM - 6 Apr 2016



Anne Gibson
@perpendicularme

Follow

Low vision readers won’t be on a screen reader so they need some other cue that fields are or aren’t required #AEASEA #a11y

6:51 PM - 6 Apr 2016



Anne Gibson
@perpendicularme

Follow

Progressive enhancement sets a baseline for functionality, make site accidentally accessible. #AEASEA #a11y

6:53 PM - 6 Apr 2016





Anne Gibson
@perpendicularme

 Follow

Accessibility API brokers language between operating system and browser #AEASEA #a11y

6:53 PM - 6 Apr 2016



Anne Gibson
@perpendicularme

 Follow

When to use HTML 5 and when Aria? HTML 5 as base, add Aria when there's no semantic alternative #AEASEA #a11y

6:54 PM - 6 Apr 2016



Anne Gibson
@perpendicularme

 Follow

Can we rely on assistive tech to keep up with HTML 5? No, AT won't move as fast. Plan for that #AEASEA #a11y

6:55 PM - 6 Apr 2016



Anne Gibson
@perpendicularme

 Follow

Hey great timing ;) #aeasea #a11y [twitter.com/karlgroves/sta...](https://twitter.com/karlgroves/status/684111111111111111)

6:56 PM - 6 Apr 2016





Anne Gibson
@perpendicularme

Follow

On a scale of 1 to 10 how important is user testing for ARIA? At least 10. Aria is the most complex thing affecting users
[#AEASEA](#) [#a11y](#)

6:57 PM - 6 Apr 2016

4 2



Anne Gibson
@perpendicularme

Follow

How do you prioritize where to start making your site more accessible? Start with the keyboard, then images or forms.
[#AEASEA](#) [#a11y](#)

6:59 PM - 6 Apr 2016

2 3



Anne Gibson
@perpendicularme

Follow

Don't go through the site and say "all keyboard! Then all forms! Then all images!" Chunk it by task flow for high traffic [#AEASEA](#)
[#a11y](#)

7:00 PM - 6 Apr 2016

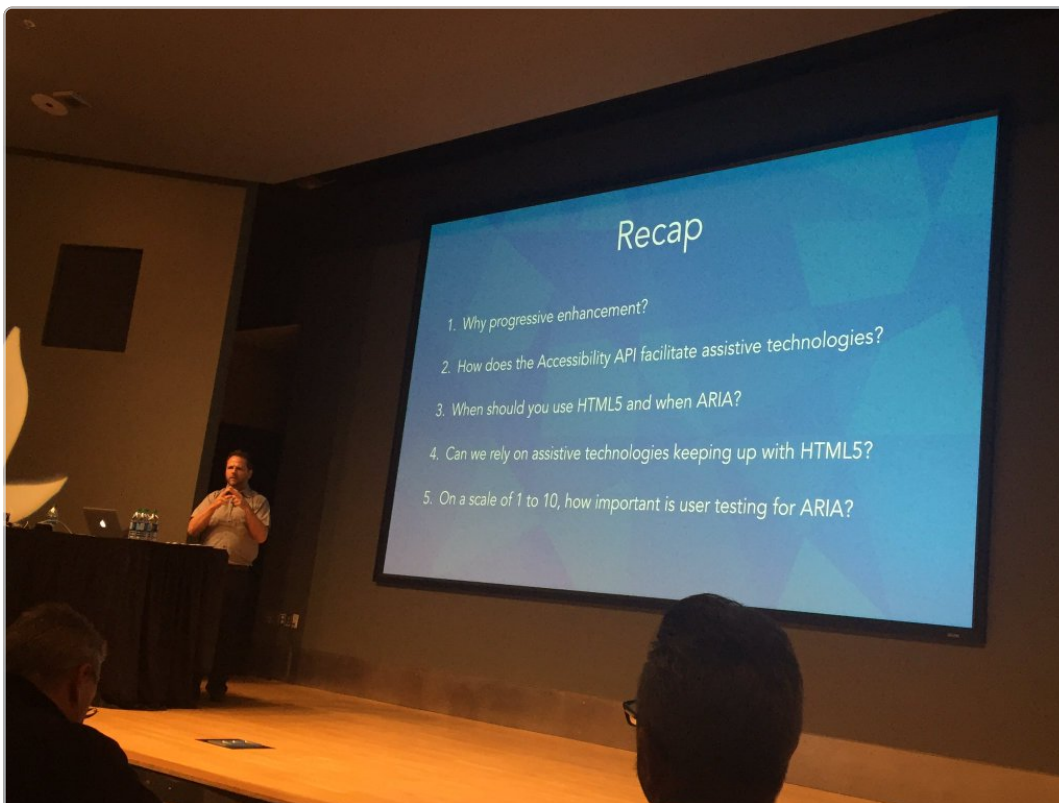
2 1



Brittany Bentley
@bbcbentley

Where to start making a site accessible? Keyboards, images, and forms. Start with important user task flows. [#a11y](#) [#aeasea](#)

A YEAR AGO



Soumow Atitallah

@souwow

Follow

And that's a wrap on the [#accessibility](#) workshop day
[@aneventapart](#) [#aeasea](#) [@feather](#)

7:00 PM - 6 Apr 2016 · Seattle, WA

4

Like

Share

Related stories

“By examining the extreme ends of a set of phenomena in depth, the entire universe of relationships can be illuminated since other instances will fall somewhere between on the map of relations and links.”

